

BRONSENS

CHARTERED ACCOUNTANTS
REGISTERED AUDITORS

IHT planning is not just about tax

Estate planning remains as essential as ever despite last year's announcement that a surviving spouse or civil partner can inherit their deceased spouse's or partner's inheritance tax (IHT) nil rate band. That change is certainly welcome, but couples may still be able to save more IHT by passing on assets at the time of the first death. While lifetime gifts continue to be important, there are also vital non-tax-related issues to consider.

The starting point of any estate planning is not tax, but to consider your own family circumstances and what you wish to achieve. There is no universal right answer. What is best for you will depend on your financial position and that of your potential heirs, and also what might happen during your lifetime and during theirs.

For example, many people want to make sure their children inherit their assets eventually, but wish to provide for their surviving spouse

or partner during their lifetime. Passing all assets to a spouse or partner on the first death will now not necessarily waste a nil rate band, but if the survivor remarries, the family's wealth may never reach the intended beneficiaries.

Despite the tax changes in March 2006 that ended the favourable tax treatment of some types of trust, a trust is still a useful tool for ensuring the required succession and can help protect assets against unforeseen risks, such as a spendthrift heir, divorce and bankruptcy.

Passing on assets on the first death can also save IHT. The value of the assets may increase faster than the value of the nil rate band. And remarriage would limit the amount of nil rate band that can be inherited.

Above all, flexibility is important. Circumstances change, as do tax rules. We can help you to formulate your wishes and make sure that your estate planning will achieve them in the most tax-efficient way.

BRONSENS

Oxford Office

26, Beaumont Street, Oxford OX1 2NP
Tel: 01865-552996. Fax: 01865-404090
Email: oxford@bronsens.co.uk

Chipping Norton Office

Hillside, Albion Street
Chipping Norton
Oxfordshire OX7 5BH
Tel: 01608-642051. Fax: 01608-641702
Email: chippingnorton@bronsens.co.uk

Witney Office

(Trading as Bronsens Parmenter)
14 Langdale Court
Market Square, Witney
Oxfordshire OX28 6FQ
Tel: 01993 776593. Fax: 01993 775230
Email: info@bronsens-parmenter.co.uk

Partners: - Judith Borsay
- Phil Burton
- Barry Sennett
- Mark Winks

Consultant: - Philip Parmenter

www.bronsens.co.uk

B.K.S. Payroll Services Limited
(Bookkeeping & Payroll Services)

Contact: Shirley Furze
Tel: 01608-649333. Fax: 01608-641702

Planning your capital expenditure



Businesses must carefully plan their capital expenditure programmes if they are to make best use of the new £50,000 annual investment allowance (AIA). Expenditure on most business plant and machinery can qualify for the allowance, which gives 100% tax relief in the year of purchase. It applies to expenditure from 1 April 2008 for companies, and from 6 April 2008 for sole traders and partnerships.

Not surprisingly, cars do not qualify. However, there is a separate 100% allowance for the cost of new cars with carbon dioxide emissions of not more than 110g/km. The 100% first year allowance for designated energy-saving or environmentally beneficial plant or machinery also continues alongside the AIA, as does the 100% allowance for capital expenditure on research and development. Expenditure on long-life assets and assets for leasing qualifies for the AIA.

If you spend more than £50,000 in a year, the excess expenditure will only attract a writing-down allowance, which has now been reduced to 20% from 25%. It may therefore be worth bringing forward or delaying expenditure to avoid exceeding the £50,000 AIA limit in any one year.

Continued on back page

In This Edition

- **Qualifying for entrepreneurs' relief**
- **The age allowance trap**
- **VAT time-travel opportunity**
- **Early tax returns**
- **Employment and migration review**
- **Websites that work**

Qualifying for entrepreneurs' relief



Entrepreneurs' relief has replaced business assets taper relief as a way of reducing capital gains tax (CGT) on certain business disposals. But the two reliefs are very different in a number of important respects. In particular, the qualifying conditions for entrepreneurs' relief are much more restrictive, so you will need to take care to make sure a disposal qualifies.

Entrepreneurs' relief reduces up to £1 million of gains by 4/9ths. Since the CGT rate is now 18%, this results in qualifying gains being taxed at an effective rate of 10%. Relief is available only on material

disposals. For a sole trader or partner, this is the disposal of all or part of their interest in the business, or of business assets within three years after the business has ended.

A shareholder can qualify for relief on the disposal of shares in their personal company. This is a company in which, for at least a year ending with the date of the disposal, the shareholder has been a director or employee, and has owned at least 5% of the ordinary share capital carrying at least 5% of the voting rights. The company must be a trading company or the holding company of a trading group.

Once you have made a material disposal, you may be able to claim relief on an associated disposal as well. This is a disposal of assets, such as premises, that you owned personally but were used for the business for at least a year ending with the material disposal.

But there are some extra conditions for associated disposals. The one most likely to cause difficulty is that relief is restricted where the owner received rent from the company or partnership for use of the asset. The relief is reduced by reference to the proportion of market rent charged over the whole period of ownership of the property. For business taper relief, it did not matter if rent was charged. The problem is that if you have a mortgage on the property it is generally tax-efficient to charge rent so that you can claim tax relief for the interest. You must also be withdrawing from involvement in the business. So, for example, you cannot claim entrepreneurs' relief on the sale of a property used by your company if you remain a director or employee.

There are other conditions that operate over the whole period of ownership, so you need to put the optimum arrangements in place now.

The age allowance trap



Pensioners have benefited from a large rise in their tax-free personal allowances. The rise of nearly £1,500 for people aged 65 and over was intended as compensation for the loss of the 10% tax band. People aged 65 to 74 with income up to £21,800 now pay no tax on the first £9,030 of income, and those aged 75 or more pay tax only on income over £9,180.

The age-related part of the personal allowance is reduced by £1 for every £2 of income over £21,800. This rule now results in a band of income between £21,800 and £27,790 being taxed in effect at 30% for a person aged 65 to 74. The extra 10% on top of the 20% basic rate of tax results from the withdrawal of the age allowance. For people aged 75 and over, this 30% band goes up to £28,090.

However, the beginning of a tax year is an ideal time to plan to make sure your income stays below £21,800. If you are married or in a civil partnership, and one of you has income below £21,800, you could transfer income-producing investments from the higher income partner to the other to maximise your combined entitlement to the age allowance.

If that still leaves one of you with income above £21,800, you could consider

switching to investments that produce capital gains instead of income. Capital gains are now taxed at 18% and the first £9,600 of gains in the current tax year is free of tax. Ideally you should make the switch soon and before a lot of taxable income has accrued, although you must always consider whether what you plan to buy is a good investment as well as being tax-efficient.

Some investments are tax-free, such as National Savings Certificates, though again you should compare net investment returns. You should certainly use your ISA allowance and there is no need to wait until the end of the year to do this.

If you are under 75 years old, you might even consider paying money into a pension scheme. The payment, grossed up by 20% for basic rate tax, is deducted from your income in the age allowance calculation.

VAT time-travel opportunity



Businesses that under-claimed input VAT for accounting periods ending between 1 April 1973 and 1 May 1997 can now claim it back. The Finance Bill has brought in transitional rules allowing businesses to make VAT repayment claims for periods up to the date the present three-year time limit for claims was introduced.

The change follows a ruling by the Lords in January 2008 that the three-year limit does not have effect for any right to claim input tax for periods before 1 May 1997 because no transitional period was provided at the time. The new transitional period, which rectifies this, runs up to 31 March 2009.

Claims for repayment because a trader accounted for more output tax than was due became subject to a three-year time limit on 4 December 1996. The transitional rules will allow claims for periods up to that date.

Correcting more recent errors in VAT returns is about to become easier as well. At present, if you find you have made mistakes in a VAT return, you can correct them in the return for the period in which you discover them, provided the net amount involved is not more than £2,000. From 1 July 2008, that limit will increase to £10,000 or 1% of turnover, whichever is the greater, subject to a maximum of £50,000.

You can only correct errors that occurred in accounting periods that ended within the previous three years. If you discover errors amounting to more than the new limit you cannot correct them in a VAT return but must disclose them in writing to your local VAT Business Advice Centre. You will need to give full details of the amount of each error and when and how it arose.

Making a voluntary disclosure of errors will avoid the misdeclaration penalty that HM Revenue & Customs (HMRC) may charge if it discovers errors during an enquiry. However, HMRC may charge interest on underpaid VAT, depending on the circumstances of the error.

Like all taxes, the VAT rules change constantly. If you need help with your VAT returns, or have questions about any aspect of VAT, please get in touch.

Early tax returns

If you want to file your 2007/08 tax return on paper, it will have to reach HM Revenue & Customs (HMRC) by 31 October 2008, although you will have until 31 January 2009 if you file online. This is part of HMRC's move to encourage online filing.

If you file on paper by 31 October 2008, you can ask HMRC to collect an underpayment of up to £2,000 through PAYE during the 2009/10 tax year. HMRC will also calculate the tax in time for the balancing payment date of 31 January 2009. A calculation is automatically included as part of the online filing system.

Taxpayers who file their 2007/08 return online have until 30 December 2008 if they want an underpayment of up to £2,000 collected through PAYE. As well as allowing more time, online filing is simple and less likely to result in HMRC errors. If we have not filed a return for you online before, HMRC will send you an authorisation code, which you will need to give us as confirmation of your agreement.

Whatever you do, please do not leave everything to the last moment. You can send us information as soon as you receive it, such as your P60 and statements of investment income. This will also help us advise you throughout the year.

LAW

Employment and migration review

Employers now have to make annual checks on employees with a limited leave to remain in the UK to make sure they are still entitled to work in the UK. The new requirement applies only to employees taken on from 29 February 2008 and is part of a package of measures to prevent illegal working.

Since 1997, employers have had to check documents from one of two lists before taking on a new employee, and this requirement continues. If the checks are undertaken correctly and evidence retained, normally in the form of photocopies, the employer cannot be prosecuted if the employee turns out not to have the right to work in the UK. For employees on time-limited visas who start work after

28 February 2008, this statutory defence will only last 12 months until they can show that they have an indefinite right to work.

Employers who fail to check entitlement to work can be fined up to £10,000 for each illegal worker and can face criminal prosecution for knowingly employing someone who is not allowed to work in the UK.

The requirement to check documents applies to all new starters. Employers



must avoid any racial discrimination in their policies for status checks. The lists of acceptable documents are maintained by the Border and Immigration Agency.

Tax Calendar 2008

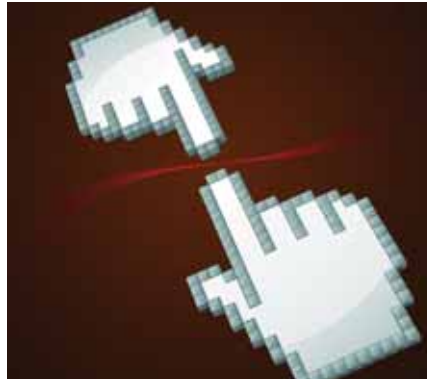
June

- 13** Instalment of corporation tax due for large companies with year ending 28 February, 31 May, 31 August and 30 November 2007.
- 19** Pay PAYE/NIC and CIS deductions for period ending 5 June. Submit CIS contractors' monthly return.
- 20** Due date for PAYE/NIC and CIS deductions if paying electronically.
- 30** Submit CT600 for companies with year ending 30 June 2007. Last day to amend CT600 for year ending 30 June 2006. File accounts at Companies House for private companies with year ending 31 August 2007 and for public companies with year ending 30 November 2007.

July

- 1** Corporation tax due for companies that pay the tax annually with year ending 30 September 2007.
- 5** Last date to reach PAYE settlement agreement (PSA) for 2007/08. Close companies to elect for all beneficial loans to a director to be treated as a single loan.
- 6** Last day to file 2007/08 P11D/P9D forms and issue them to employees (penalties charged from 19 July 2008). Last day to report 2007/08 awards of shares or share options to employees.
- 14** Due date for CT61 return and payment for quarter to 30 June 2008. Instalment of corporation tax due for large companies with year ending 31 March, 30 June, 30 September and 31 December 2007.
- 18** Final date to pay 2007/08 class 1A NIC (22nd if paying electronically). Pay PAYE/NIC and CIS deductions for period ending 5 July. Submit CIS contractors' monthly return.
- 22** Due date for PAYE/NIC and CIS deductions if paying electronically.
- 30** File accounts at Companies House for private companies with year ending 30 September 2007.
- 31** Due date for second payment on account of 2007/08 income tax. Last day to pay 2006/07 tax to avoid second automatic 5% surcharge and to file 2006/07 tax return to avoid second automatic penalty up to £100.

Websites that work



Most businesses have a web presence, but by not providing the right information on your company's website, you can have an adverse impact on customers and users.

According to recent consumer research commissioned by webhosting company 1&1 Internet, a surprising 83% of Britons have been negatively affected by being unable to find contact details from a business's website. The problem made over half feel angry and stressed, with one in five feeling powerless and desperate. Alarming, the research found the inability to find a way to contact a business from its website to be the biggest customer service bugbear for 77.2% of people – beating both being held in a telephone queue (77.1%), and being forced to listen to bad on-hold music (42%).

The survey also found that 90% of consumers want real-time live dialogue with a business online, using live-chat, forums or call-me-back facilities. A third actually want them from the UK businesses they currently use. By contrast, however,

further recent research among small and medium-sized enterprises found that nearly all businesses did not offer such facilities and almost half had no plans to introduce them.

Remember, customers have to find your website first. Many consumers nowadays use a search engine to track down the services they require, and if your website does not come up quickly you could lose potential income.

While there is no quick fix to occupying a top spot or high ranking with any search engine, you should be using search engine optimisation techniques (SEO) to make the most of your website. The costs for doing this can vary, but you can do much of the initial work internally with minimum expense.

Start by understanding what ranking you currently have, the keywords and phrases customers are using to find you and how you can capitalise on this knowledge. There are various free web tools which can also show you what the competition is like for each search.

Be aware that search engines pick up and penalise websites that contain duplicate or similar content but 'promote' those which are regularly updated and have links from external websites. Initial analysis should indicate how important your website is and help you decide how much money you are therefore prepared to commit to improving communication and deploying SEO techniques.

Planning your capital expenditure

Continued from front page

The allowance is proportionately increased or reduced for accounting periods that are longer or shorter than 12 months. There is also a restriction where a period spans the introduction date. So if, for example, your company makes up accounts for the year to 31 December 2008, the maximum entitlement to AIA for that year is £37,500 based on the period 1 April to 31 December 2008.

Further aspects of the AIA that require care

include the rules on related businesses. Companies that form a group are entitled to only one AIA between them. Companies that do not form a group, but are controlled by the same person or persons, will also share just one AIA if they are 'related', eg sharing business premises. The same goes for unincorporated businesses under common control. However, if a sole trader also controls a limited company, both businesses will be entitled to their own AIA, regardless of whether they are 'related'.